

STOCKHOLM  
*winner 2010*



EUROPEAN  
**GREEN CAPITAL**



THE CITY OF STOCKHOLM



17/10/2009  
PAGE 1



THE CITY OF STOCKHOLM

17/10/2009  
PAGE 2



# Stockholm has done it!

Integrating sustainable solutions



Stockholms län

Sweden  
9 Milj

County of Stockholm 2 Milj

City of Stockholm

800 000



# Vision 2030 combining growth with sustainable development

- 150 000 more citizens
- Denser city
- Fossil free 2050
- Waste use – recycling
- Urban structure and green belts
- Integrated sustainable solutions
- Public Awareness



THE CITY OF STOCKHOLM

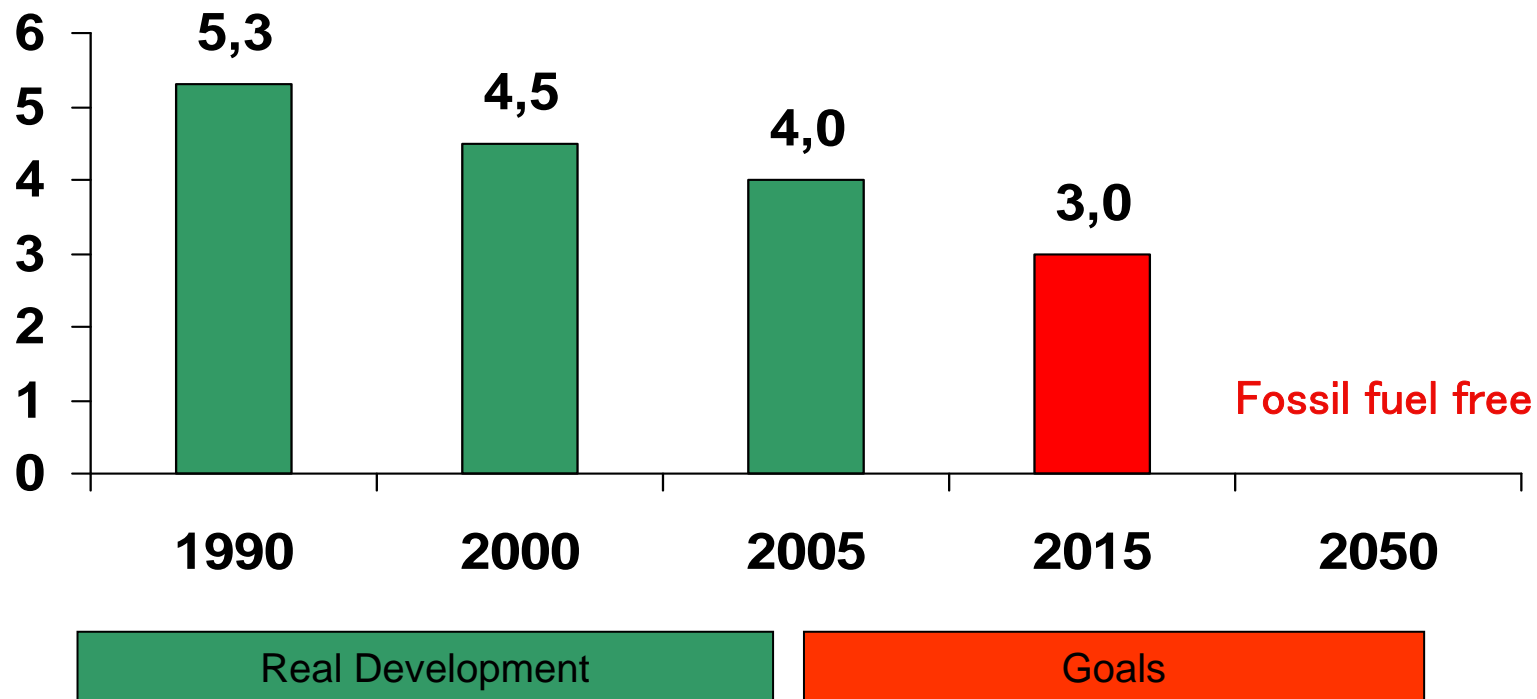


17/10/2009

PAGE 4

# Goals and achievements

Tonnes CO<sub>2</sub>-ekv per capita



THE CITY OF STOCKHOLM



17/10/2009

PAGE 5

# The Hammarby Waterfront project

- Size 180 ha
- 10 400 new flats
- 200.000 m2 new offices, services
- Construction time 1995–2017
- Sustainable development
- Renewable energy use
- Integrated transport and land use
- Eco cycle model



# Two new sustainable areas

## Lövholmen



## Norra Djurgården – The Royal Seaport



THE CITY OF STOCKHOLM



17/10/2009  
PAGE 7

# The Royal Seaport



**Over all bejective:**

- År 2030 är Norra Djurgårdss. fossil free
- År 2020 under 1,5 ton per person
- A Climate adopted area

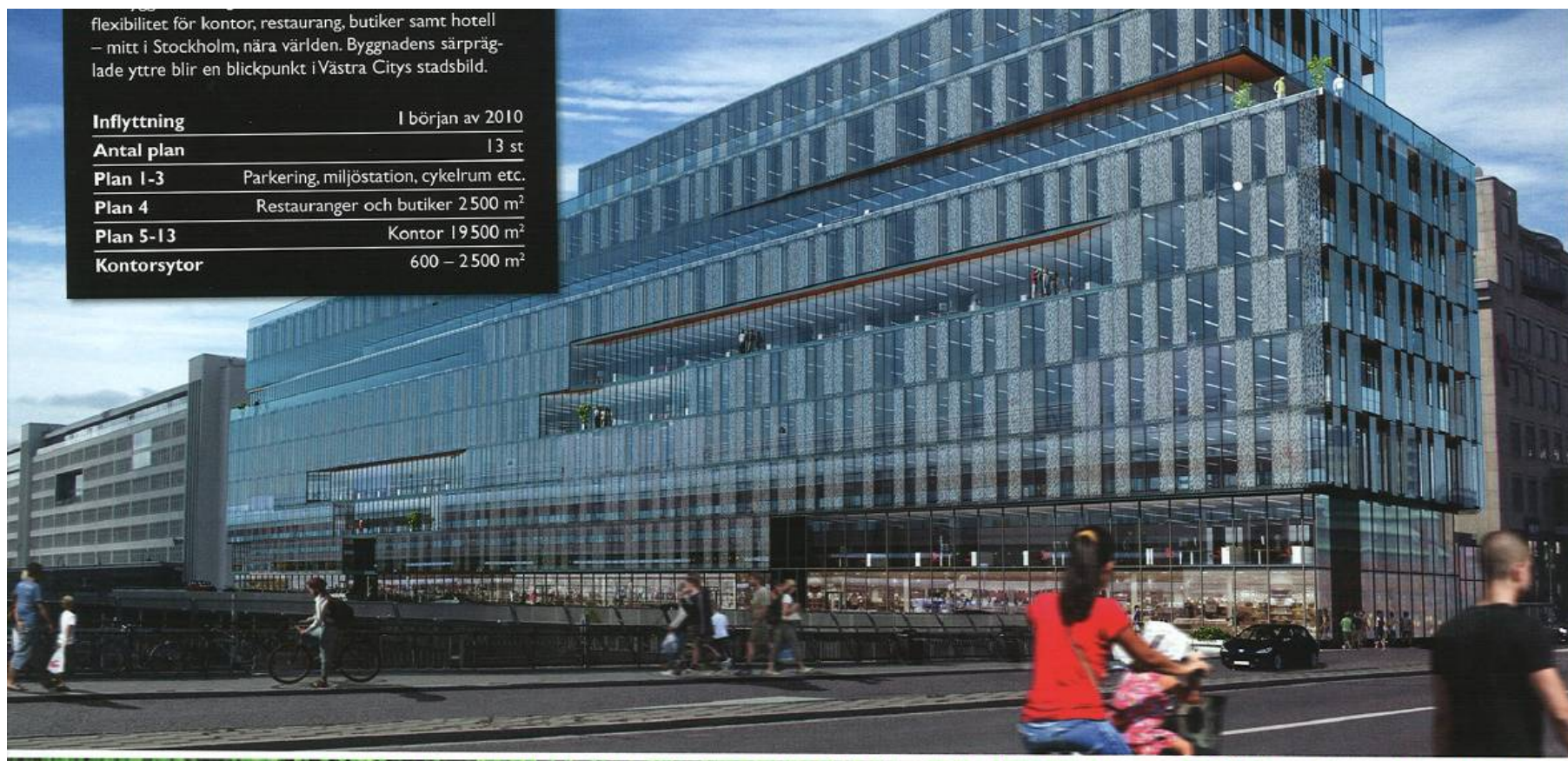


# Urban renewal, improving energy performance

- Husby from the 1960:ies
- Improving energy efficiency
  - From 158 to 30 or 64 kwh/m<sup>2</sup>,year
- Energy system and supply
  - Photoelectric panels
  - Better use of district heating
  - Reducing the need for bought energy
  - Garbage disposals for biogas production



# Jernhusens new climate smart building close to the city center and railway station



flexibilitet för kontor, restaurang, butiker samt hotell – mitt i Stockholm, nära världen. Byggnadens särpräglade yttre blir en blickpunkt i Västra Citys stadsbild.

<b>Inflyttning</b>	I början av 2010
<b>Antal plan</b>	13 st
<b>Plan 1-3</b>	Parkering, miljöstation, cykelrum etc.
<b>Plan 4</b>	Restauranger och butiker 2 500 m <sup>2</sup>
<b>Plan 5-13</b>	Kontor 19 500 m <sup>2</sup>
<b>Kontorsytor</b>	600 – 2 500 m <sup>2</sup>



THE CITY OF STOCKHOLM



17/10/2009  
PAGE 10

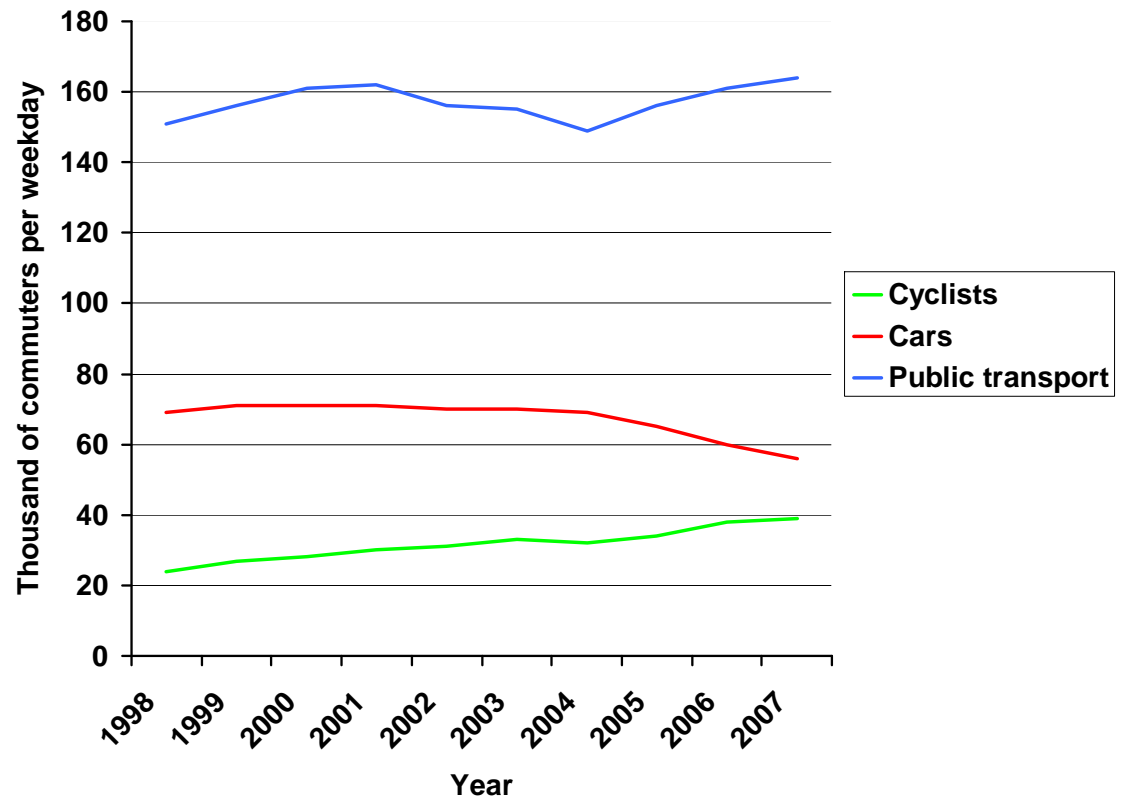
# District heating & Co-generation

- Co-generation, biofuels, waste
- Heat pumps from sewage water
- Market share 80 %
- Fossil fuel 21 %
- District cooling

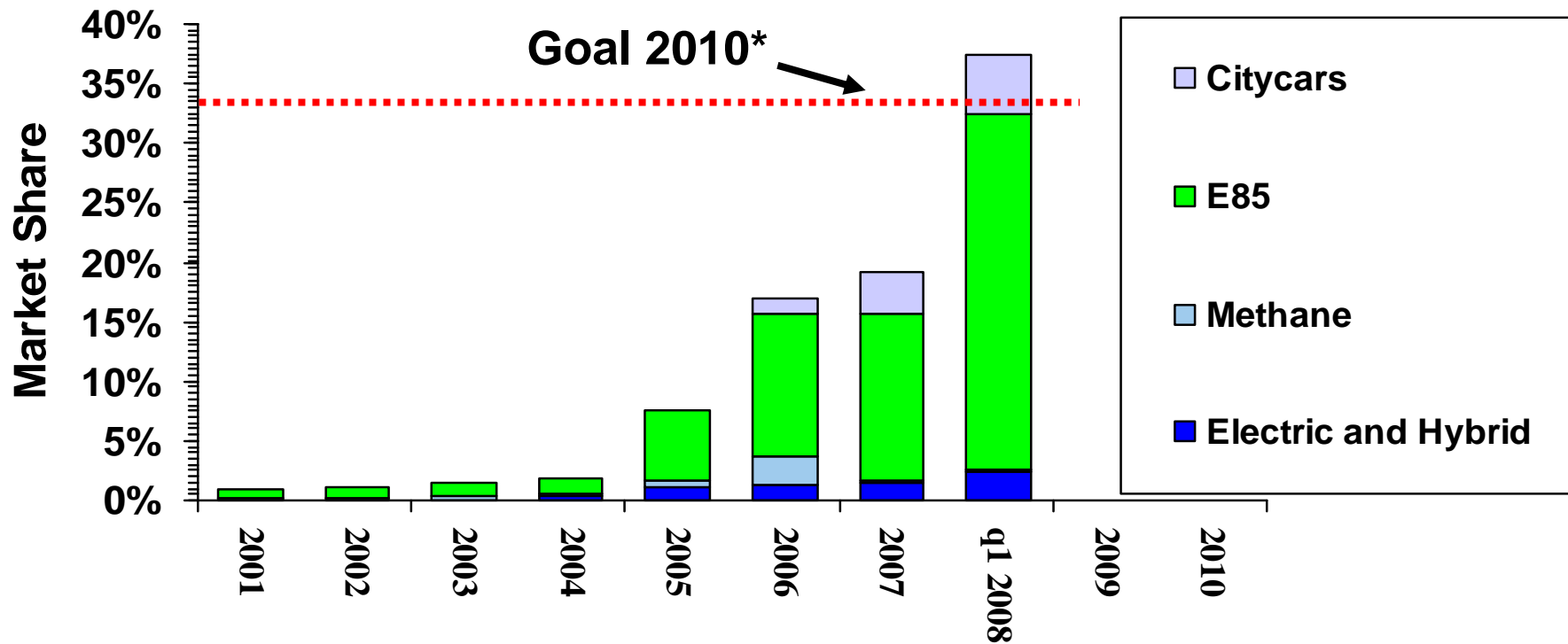




## Car, cycle and public transport to the inner city



# Sales of Clean vehicles Sweden & Stockholm region 2001–2008



\*(Stockholms Miljöprogram 2008–2011)



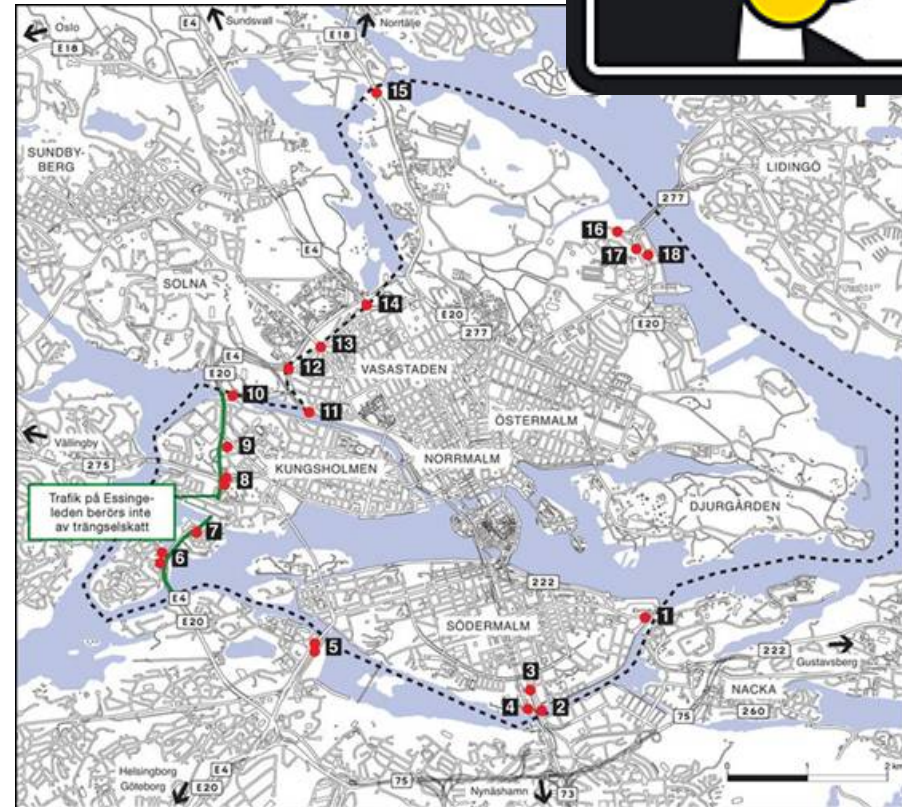
THE CITY OF STOCKHOLM



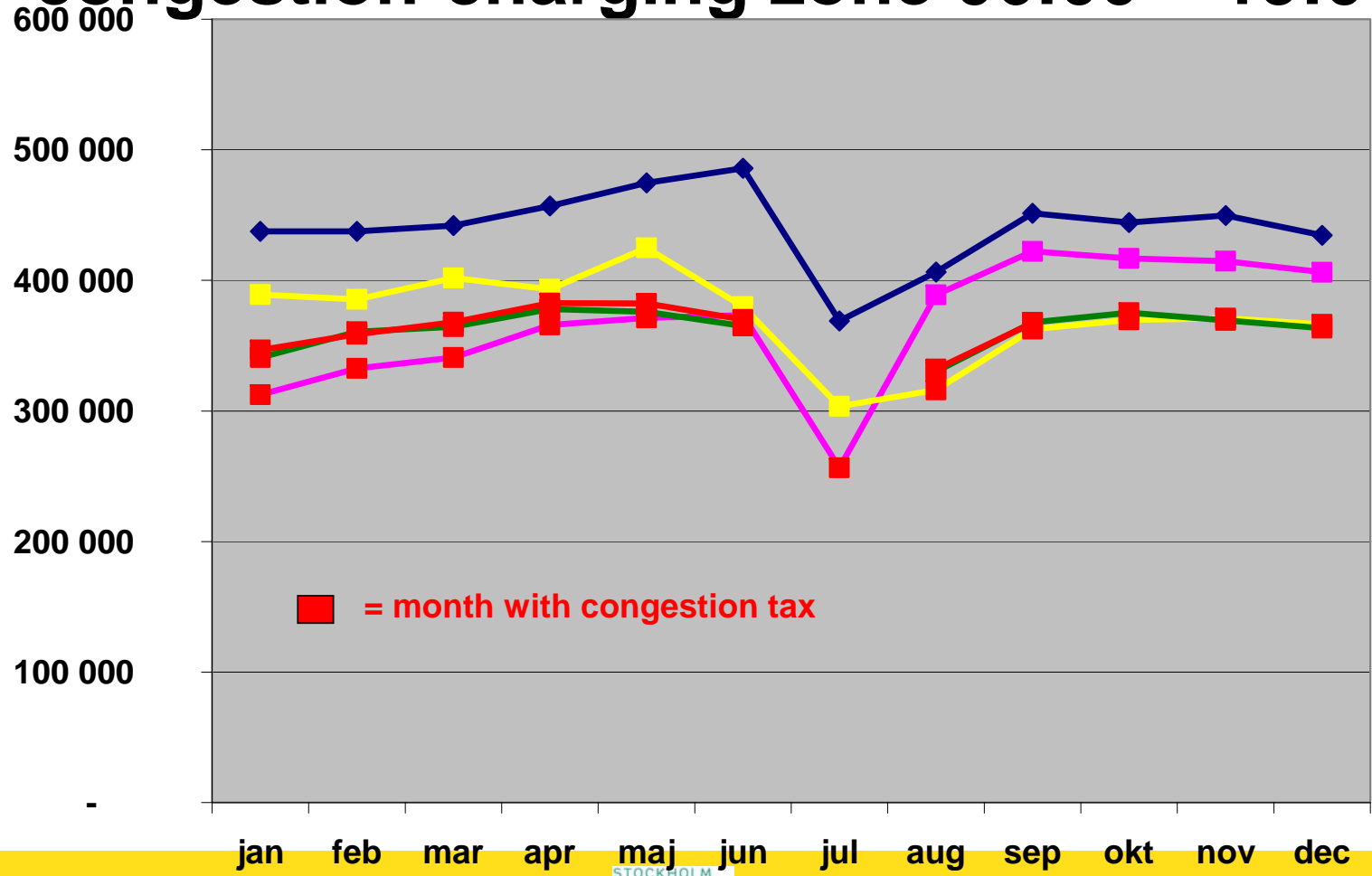
# Congestion charges



- 20 % decrease in traffic
- 10 – 14 % decrease of emissions
- 2 – 10 % better air quality
- Less human exposure
- From huge opposition to broad majority in favor



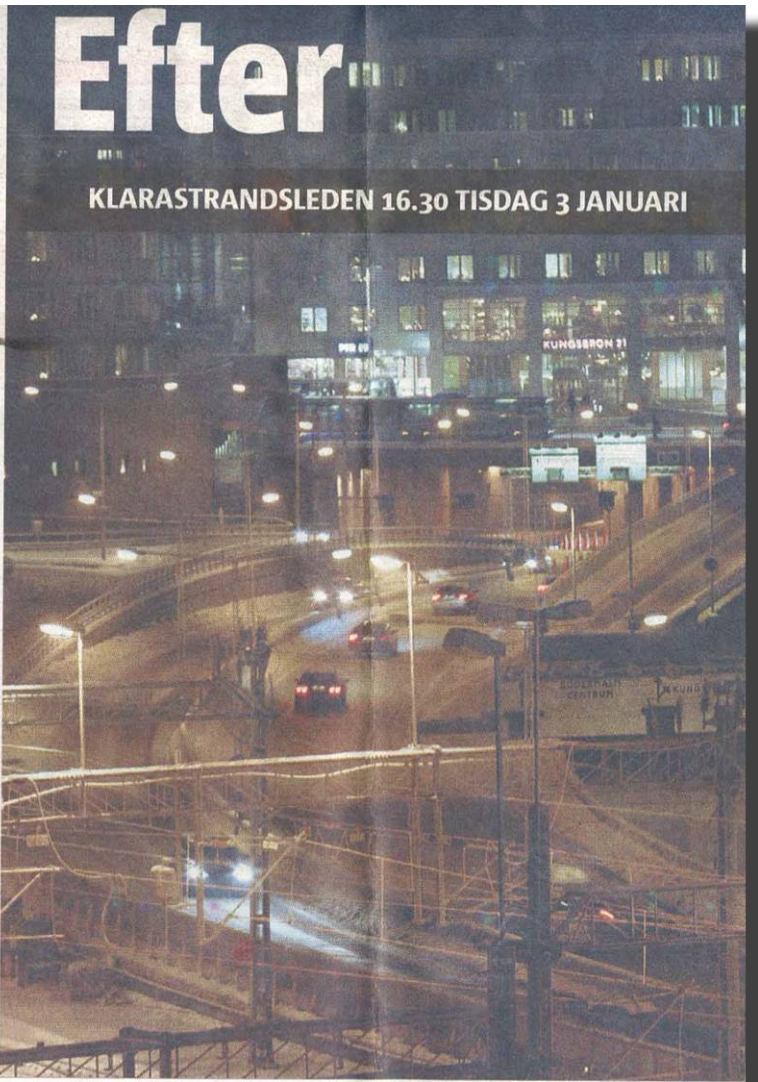
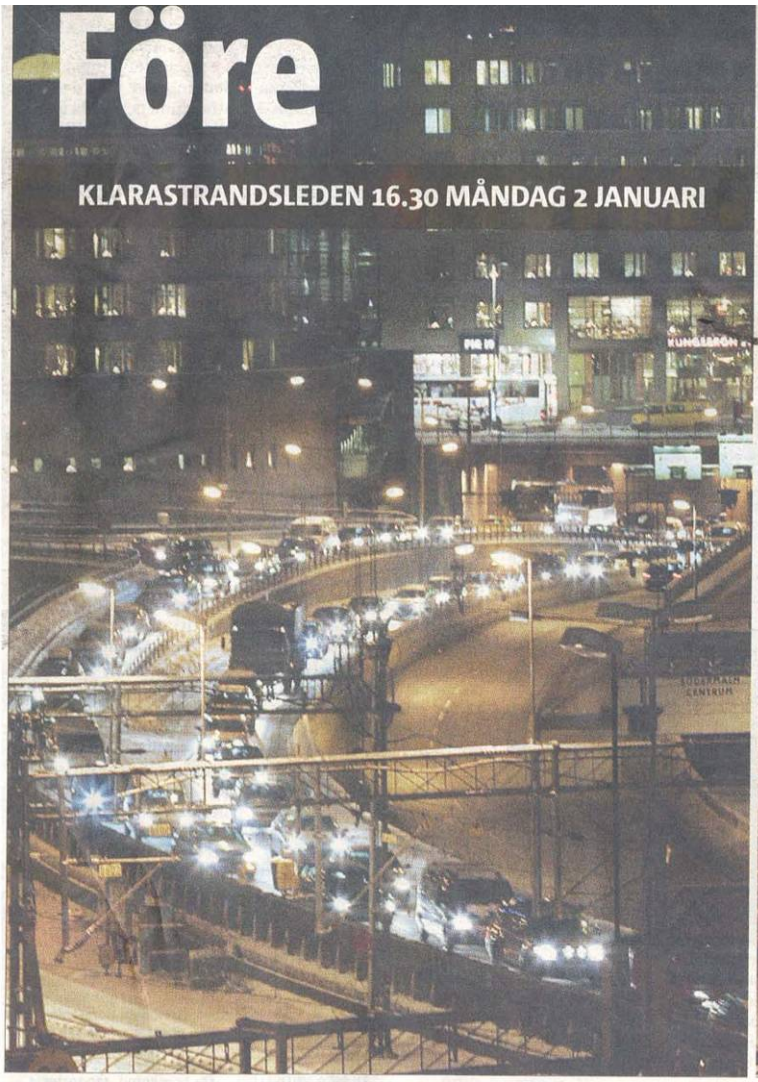
# Passages entering/departing the congestion-charging zone 06:00 – 19:00



THE CITY OF STOCKHOLM

◆ 2005 
 ■ 2006 
 ▲ 2007 
 ● 2008 
 ■ 2009





# Var fjärde bil försvann



THE CITY OF STOCKHOLM



17/10/2009  
PAGE 16



# Stockholm meets air quality directives

- Well below EC limit values
  - Sulphur dioxide, nitrogen oxides (NO<sub>x</sub>), lead, benzene, carbon monoxide, particulate matter PM<sub>2,5</sub>
- Well below EC target values
  - Arsenic, cadmium, nickel, benzo(a)pyrene, ozone
- Below EC limit values except some traffic hotspots
  - Nitrogen dioxide (NO<sub>2</sub>), particulate matter PM<sub>10</sub>

	SO <sub>2</sub>	NO <sub>2</sub>	NO <sub>x</sub>	PM <sub>10</sub>	Pb	Ben- sen	CO	Ozon	As	Cd	Ni	BaP	PM <sub>2,5</sub>



# Innovative work to decrease the environmental impact

## Today

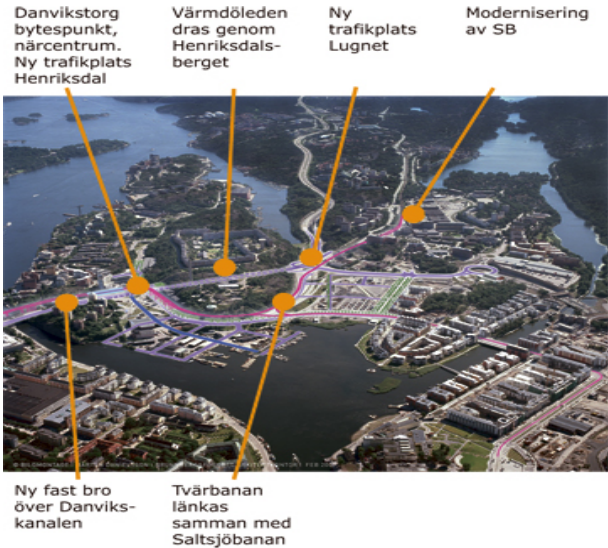
- The worlds largest ethanol bus fleet is rolling on the streets of Stockholm
- All of SL's fixed-track services are driven with electricity produced by water and wind power
- ISO 14001 certified

## 2011

- 50 % of all buses will be powered by renewable fuel (today 25 % and 100 % by 2025).



# Infrastructure investments



New tram lines

New commutertrain tunnel under the inner city



THE CITY OF STOCKHOLM



# World class port

- Highest environmental standard
- Rated 7 of 800 ports
- Reduction of SOx and NOx  
- 60% and 40% in ten years
- Differentiated port tariffs
- Discount for ships with low sulphurous fuels
- Land connected power supply



# Extensive and ambitious waste treatment

The  
Clean  
city

The city has a well developed system of waste management and recycling. Information campaigns are carried out continuously in order to raise awareness among residents about waste minimization, source separation and recycling.



- 100 % of household waste is recycled by material recycling 25%, combustion 73,5% and biological treatment 1,5%
- Combustion of waste generates 2 TWh heating and 500 GWh electricity
- 50 % of all garbage trucks drives on befuel or is hybrids
- New innovations like Vacuum controlled underground transportation of waste i Hammarby sjöstad

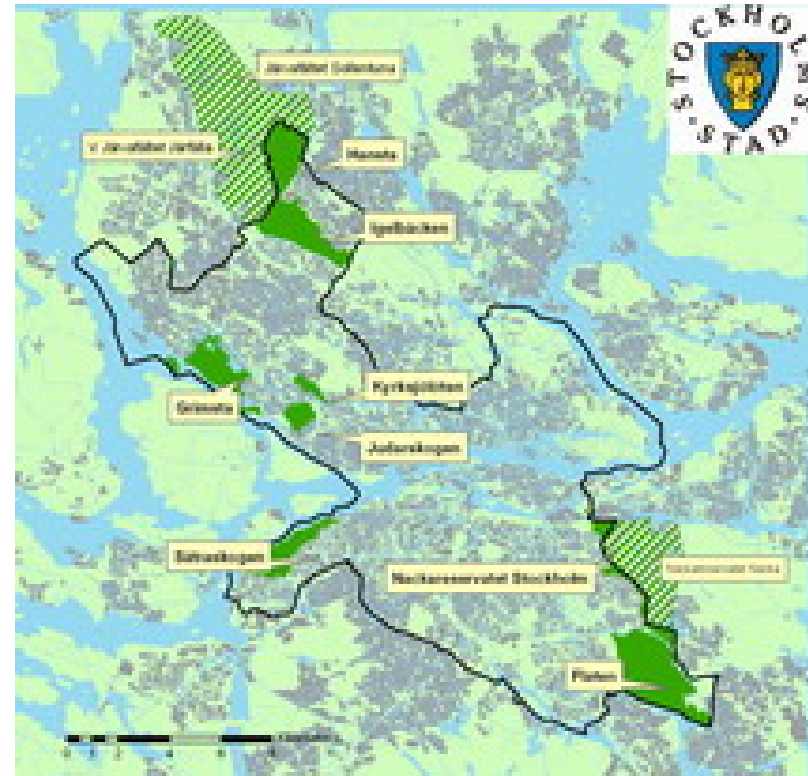
# Stockholm Water Programme 2006-2015

- In accordance with the EU WFD
- Stockholm shall have a good water status
- Stockholm's lakes and watercourses shall be attractive recreational areas for all



# The green and blue city

- 8 natural and cultural reserves
- National city park
- Species database
- 85 % are pleased with access to park or green areas



# Climate pact

## An Agreement Stockholm City - business

Ett samarbete mellan staden och näringslivet

**STOCKHOLMS KLIMATPAKT**



THE CITY OF STOCKHOLM



17/10/2009  
PAGE 24

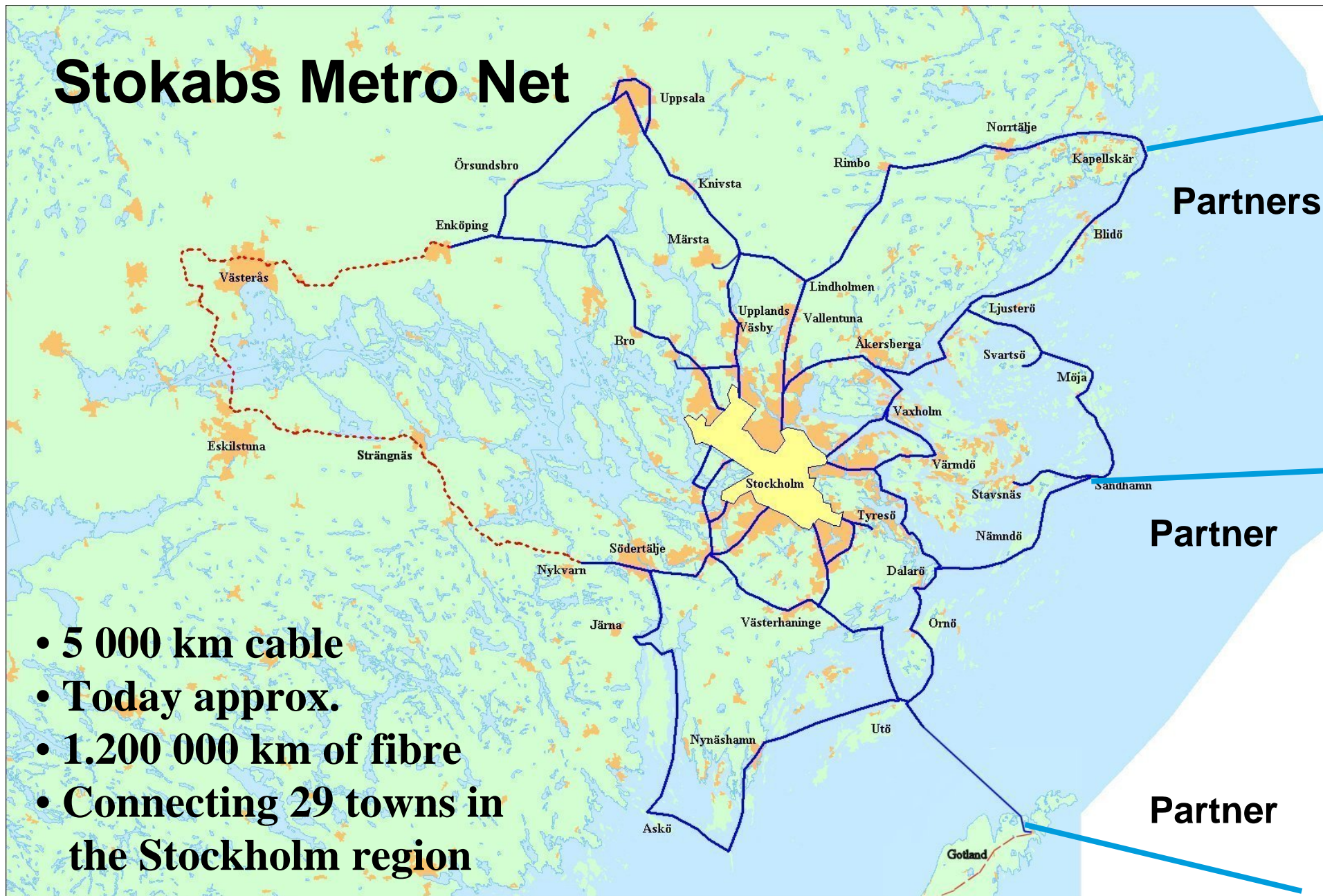




THE CITY OF STOCKHOLM



# Stokabs Metro Net



- 5 000 km cable
- Today approx.
- 1.200 000 km of fibre
- Connecting 29 towns in the Stockholm region



THE CITY OF STOCKHOLM



17/10/2009  
PAGE 26

# Green ICT



THE CITY OF STOCKHOLM



17/10/2009  
PAGE 27

A nighttime photograph of Stockholm, Sweden, showing the city's illuminated buildings and spires reflected in the water. The sky is a mix of orange and blue. The text "Thank you" is overlaid in large red letters.

Thank  
you

[www..stockholm.se/international](http://www..stockholm.se/international)