

KES

KES · Environmental Management System Standard

NPO KES Environmental Organization



KES *Environmental Management System*

○ **Smart and low-cost**

Environmental management system

○ **Tool for environmental improvement activities for SMEs and local communities**

K : Kyoto

E : Environmental

S : Standard

Background to the Establishment of *KES*

- ***The Kyoto Protocol*** was adopted in December 1997 at COP 3 (held at the Kyoto International Conference Center).
- “Pride and responsibility of Kyoto” as the home of the Kyoto Protocol
- Miyako Agenda 21 Forum (Government, businesses and community-based organizations)
- The number of large enterprises obtaining the ISO 14001 certificate increased rapidly (Sept. 1996)
⇒ There was a delay in environmental improvement measures among SMEs and the consumer sector.
- **Tool for environmental improvement activities for SMEs and local communities**
- *KES* was launched in April 2001 as a smart and low-cost environmental management system
- = Private, voluntary initiative =**

Purpose of KES

To encourage SMEs and other organizations to participate in environmental improvement activities

SMEs and other organizations are in need of an environmental management system that suits their characteristics.

1. KES is suitable for SMEs and small organizations

- (1) Small-scale and less environmental impact: **Smart***
- (2) Limited management resources (people, equipment, capital): **Low cost***

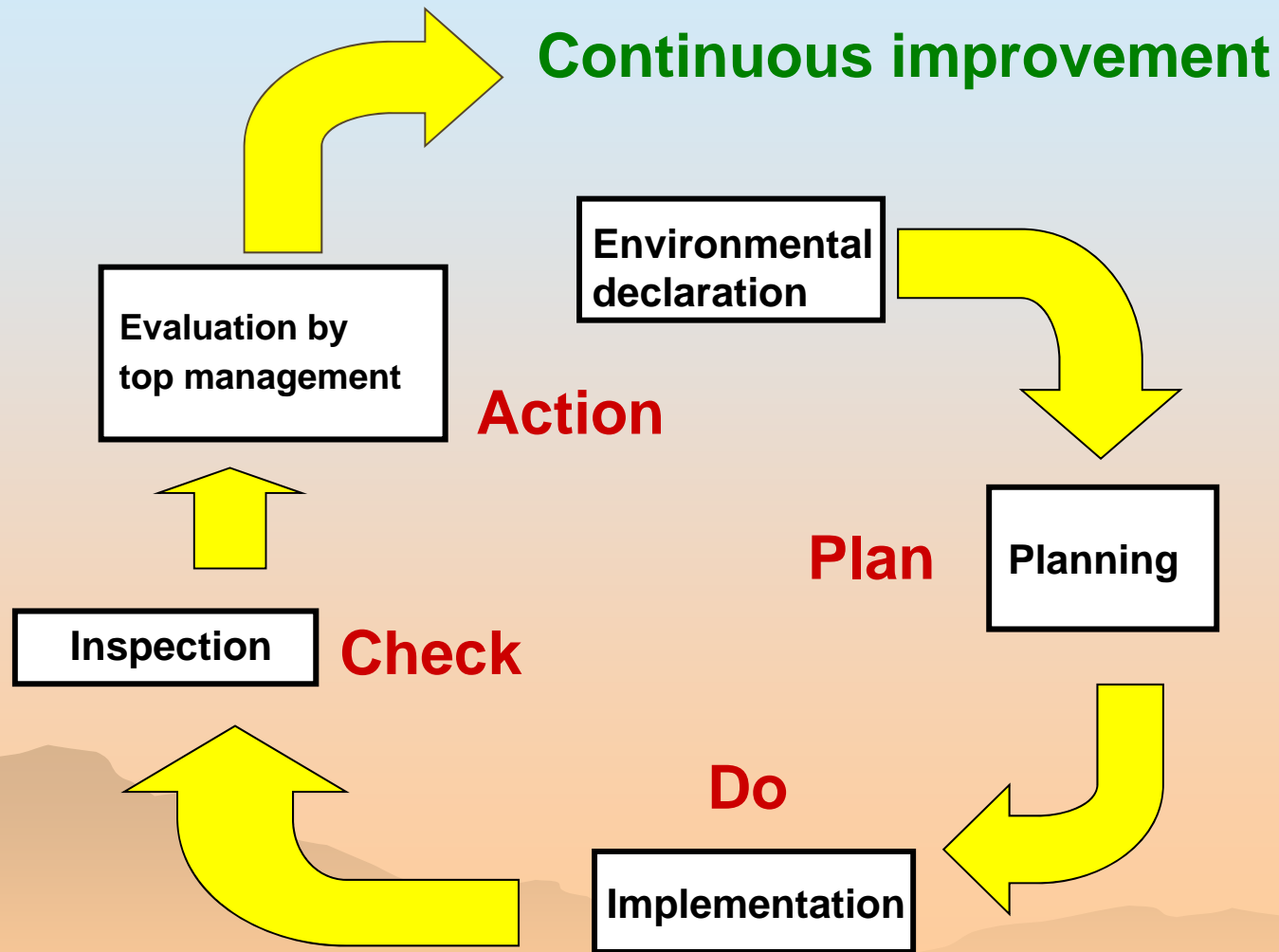
2. Advantages of introducing KES

- (1) Corporate value enhancement: **Environmental management***
- (2) Social and community contribution: **Partnership with the local community***



Conceptual Diagram of KES Management System

(The same concept as the ISO 14001 standard ⇒ Smart standard)



KES Auditors (Consultants)

1. Qualification

**Higher qualification than an ISO 14001
assistant auditor**

⇒ Fair, impartial and accurate auditing

2. Requirement

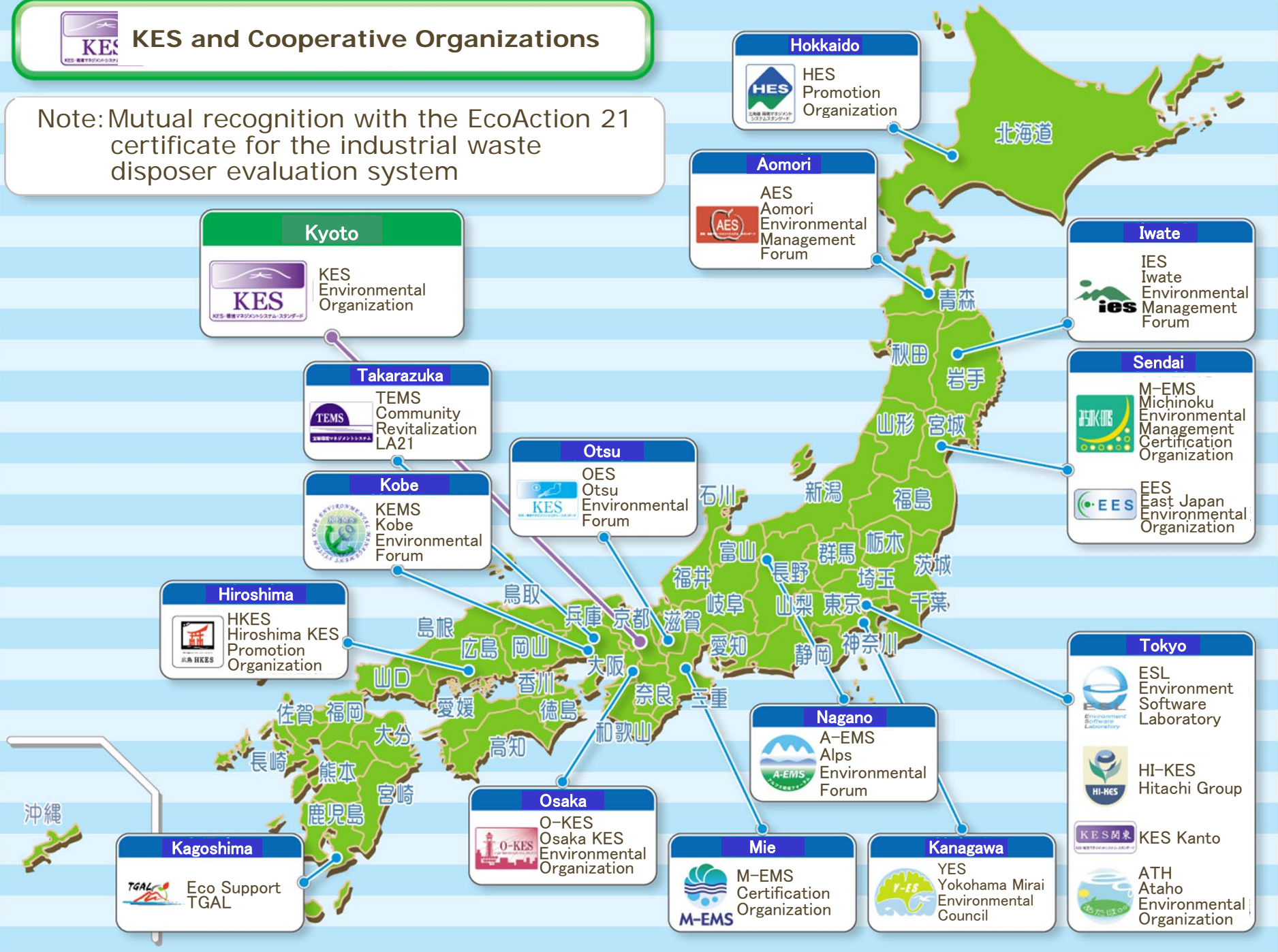
**The ability to understand and carry out
volunteer activities**

⇒ Auditing at low cost (consultation)



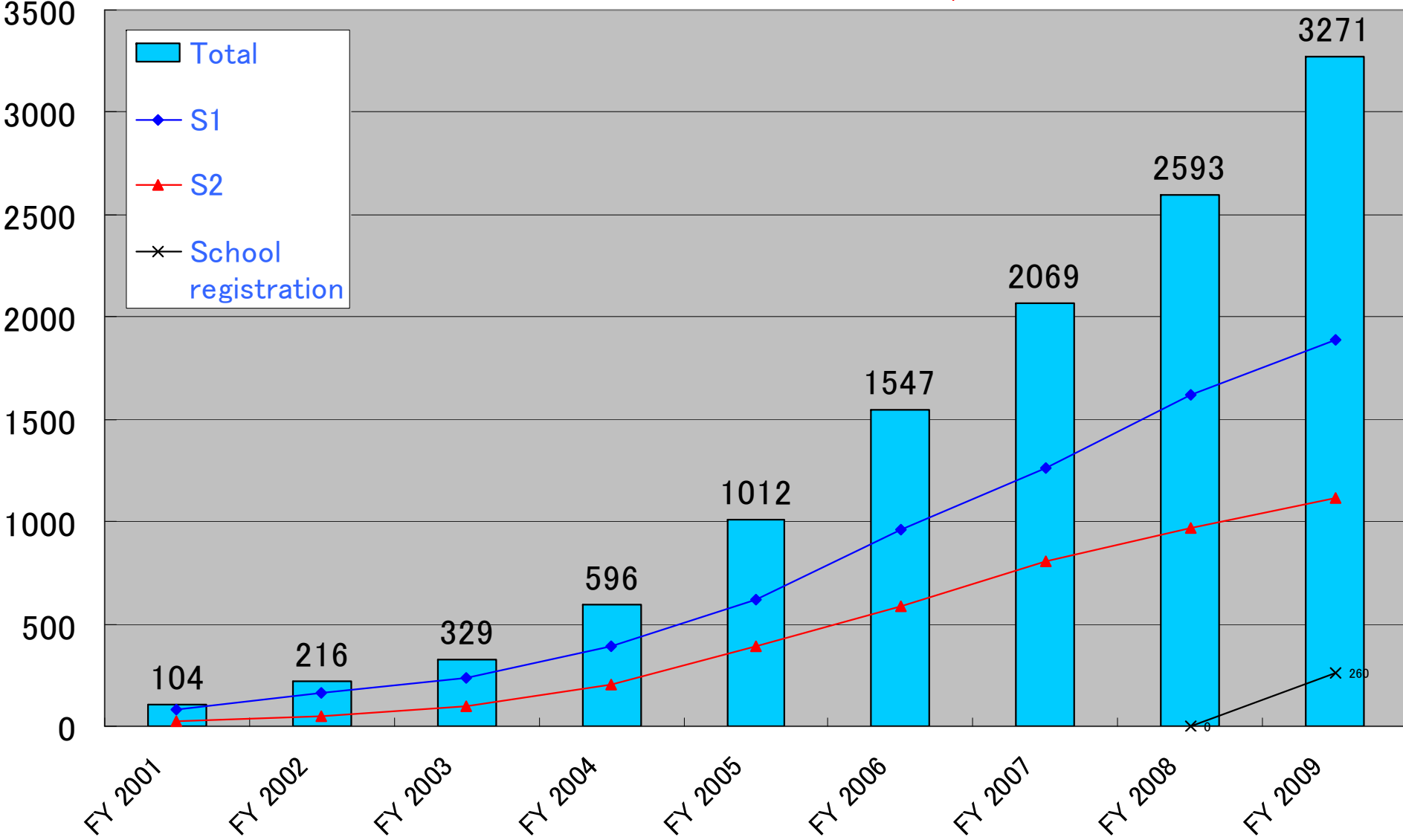
KES and Cooperative Organizations

Note: Mutual recognition with the EcoAction 21 certificate for the industrial waste disposer evaluation system



Increase in the Number of KES Registrations (including registrations in other areas)

3,271 as of the end of March 2010



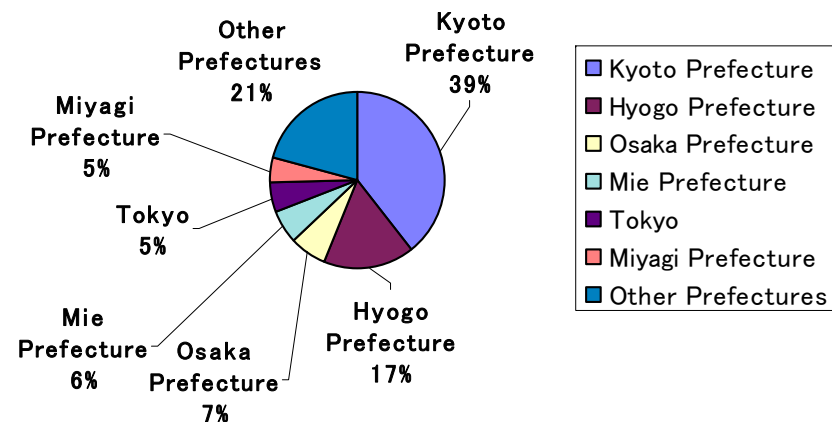
No. of KES Registrations by Prefecture (as of the end of December 2010)

Prefecture		No. of registrations	Prefecture		No. of registrations
Kinki	Kyoto	1387	Hokuriku	Toyama	31
	Shiga	62		Ishikawa	15
	Osaka	237		Fukui	14
	Hyogo	591	Tokai	Gifu	8
	Nara	7		Shizuoka	11
	Wakayama	3		Aichi	35
		mie		214	
Hokkaido	Hokkaido	70			
Tohoku	Aomori	27	Chugoku	Tottori	3
	Iwate	46		Shimane	4
	Miyagi	169		Okayama	4
	Akita	1		Hiroshima	11
	Yamagata	4		Yamaguchi	4
	Fukushima	9			
Kanto	Ibaraki	106	Shikoku	Tokushima	2
	Tochigi	10		Kagawa	1
	Gunma	8		Ehime	3
	Saitama	30	Kochi	0	
	Chiba	16	Kyushu	Fukuoka	11
	Tokyo	180		Saga	3
	Kanagawa	78		Nagasaki	3
Yamanashi	5	Kumamoto		14	
		Oita		1	
		Miyazaki		2	
		Kagoshima		48	
Shin-etsu	Nagano	10	Okinawa	Okinawa	1
	Niigata	7			
Total					3506

No. of registrations		%
Kyoto Prefecture	1387	39
Hyogo Prefecture	591	17
Osaka Prefecture	237	7
Mie Prefecture	214	6
Tokyo	180	5
Miyagi Prefecture	169	5
Other Prefectures	728	21
Total	3506	100

No. of registrations %
 Kyoto City 1095 78.9

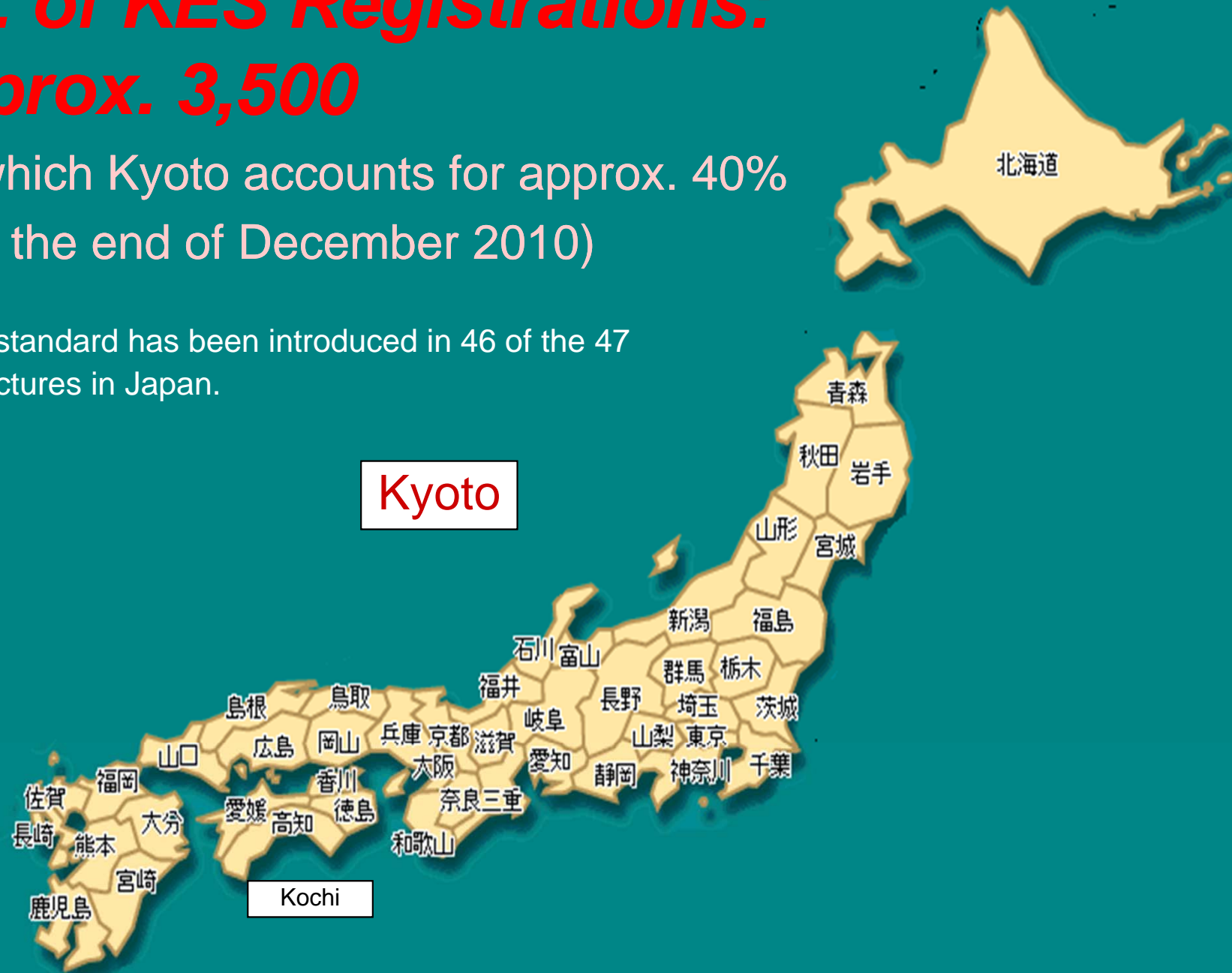
KES Registrations by Prefecture



No. of KES Registrations: approx. 3,500

(of which Kyoto accounts for approx. 40%
as of the end of December 2010)

KES standard has been introduced in 46 of the 47
prefectures in Japan.



Importance of Environmental Management in the Environmental Management System

1. Worldwide economic recession

Growing need to reconcile **Ecology** and **Economy**

2. Setting a significantly higher target for GHG emissions reduction

“Low-carbon revolution” ⇒ **Shift in industrial structure**

Carbon risk ⇒ **Carbon chance**

⇒ ***“Environmental management” (reconsidering and improving the conventional way of doing business)***

KES Achievements

1. Reduction of CO₂ emissions

Approx. **5,830** t/year (As a result of the energy-saving efforts of about 500 companies, the amount of CO₂ emissions reduced by approx. **12** t/year, per company.)

2. Improvement of corporate culture

(1) Costs reduced by energy conservation and waste reduction

*(i) "N" electric appliance manufacturer: **8.3 million yen** over two years*

*(ii) "G" hotel: **35 million yen** in one year*

(2) Enhancement of organizational strength

Pursuit of a common theme enhances organizational solidarity.

Keywords of “Sustainable Society” Development

Think Globally, Act Locally.

“Glocal” action

Food, energy, health: ***local production for local consumption***

Meeting local needs on our own by taking advantage of local strengths.

KESC
School-district-based
Local Environmental Community

KES
Schools

Local residents

KES
Businesses

Goals of *KES*

1. To promote environmental improvement activities among many organizations

2. To encourage environmental management and foster stronger partnerships with local community

(1) To encourage environmental management by offering opportunities to enhance corporate value

(2) To foster stronger partnerships with local community by offering opportunities to contribute to society (the local community)